

# Featured PRODUCT(S)

## Leg and Tail Adhesives

Years ago there was not much out there when it came to products. Today, there is a plethora of variety. We have tried and tested a lot of products and have found Weaver to be our favorite. When it comes to adhesives to bone legs we really like the variety of adhesive strengths that they have to offer. From light for the fluffy hair to strong for the tough stubborn hair they all play a part in a great fitting job. We also recommend Pro Foam to help hold up the calves body hair. We recommend that you practice at home to perfect boning legs before your show. Good luck!



## Adhesive Remover

Removing every ounce of adhesives from the hair is very important especially when you have another day of showing. We have found Pro-Refit and Pro-Remover to be the best. Once you are done showing you simply spray this product on to remove it. Instructions are pretty simple and quick. Following removal we like to use a pro-charge or revive to replenish the calves hair with nutrients so that it does not dry or burn.



## Daily Hair Care

As we start out new projects important now that you get the hair healthy and strong. Even if they don't have a lot of hair they still need it to be healthy and in good condition. For best results we recommend that you wash your calf once a week with soap and rinse the other days. After you rinse make sure that you condition the hair. There are a lot of products out there but we really like the weaver Pro-Charge to help keep their hides healthy or Sullivans Kleen Sheen.

## ROCKY MOUNTAIN JACKPOT SHOW SERIES

Here are a few dates for upcoming jackpots along the Wasatch Front. We are strong supporters of attending Jackpots so that the youth and calves get more exposure to the show ring. Makes for a better and more enjoyable project. Please feel free to call us with questions about the Jackpot Series. Specific dates can be found at [www.rockymountainjackpotshowseries.com](http://www.rockymountainjackpotshowseries.com) as dates are announced.

Kick Off Jackpot - Spanish Fork Utah - November 18th, 2017

Winter Classic - Tremonton Utah - December 2nd, 2017

National Western - Denver CO - January 2017

Breeders Cup - St. George Utah - February 2017

## The Judges Corner Ring Etiquette 101



Here are a few key things to work on at home to help you better use the ring to your advantage. You only have 5-10 minutes to be seen so make the most of it!

**1** First, use the entire ring. Make sure that when you are in the ring you walk your calf close to the perimeter. Give yourself a good 4 feet from the fence but make sure you walk the whole ring unless told different by the ring man.

Second, give yourself some distance. Make sure that you have a whole calf distance between you and the exhibitor in front of you. This allows you space to pull your calf in and out and reset them if needed.

**3** Third, remember to always push your calf when you turn him rather than pull him. This gives you more control. Also, majority of judges like you to hold your right hand on the lead near their mouth and then hold the stick and the other part of the lead in your other hand.

Eye contact, always do your best to keep eye contact on the judge. Some judges like aggressive showman and some like calm and relaxed. You will have to feel that out as the show progresses, but for sure keep yourself in eye contact of the judge.

**5** Finally, less is more. The less the judge sees you handling your calf the better. Judges like effortless showman who make it look easy. Train your calf at home like we said in the last BCC to walk into their pose and then leave them.



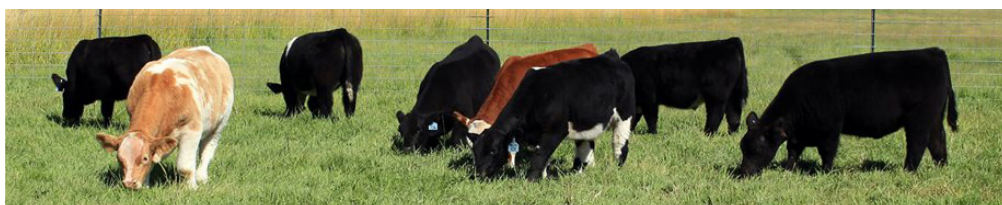
Nathan Bushman  
Phone: 801-368-7645  
[nabushman@gmail.com](mailto:nabushman@gmail.com)

# THE BCC

## THE NEWSLETTER OF CHAMPIONS



What a great sale and we are so appreciative to you for your support and confidence in our cattle. We are very excited with this year's calf crop. For those of you that are new to BCC our focus now is you! Your success is important to you therefore it is important to us! Our intent of this Newsletter is to better help you reach your goals. We are going to publish the newsletter four times over the term of your club calf project. This should better help you with the day to day care of producing you a purple ribbon. The highlights of the journal will include, hair care tips, feed tips and changes to the ration, health care, hoof trimming and more. We also are excited to offer fitting tips, product spotlights and section called **Judges Corner** to help you better prepare for the show ring. If you have questions or ideas for our newsletter please feel free to email or contact us. You can access these newsletters as well as past newsletters on our website [www.bushmancattle.com](http://www.bushmancattle.com). The password this year is "purplebound".



## Taking your calf from *Good to Great*

The success of your calf is now in your hands. We did all that we could while they were in our possession to help them reach their full potential! Now it is up to you to take your calf from **GOOD**, to **GREAT**! Here are the top 4 ways to do that! More will be found in the newsletters as the year progresses to help you along your way.

**1** Feed - This is #1 because it is the most important part. You spent the money on a good steer now help it become great and reach its potential with the right feed!

**2** Comfort - Keeping your animal out of the elements and comfortable will help them feel better, look better and reach peak efficiency on feed and a strong hair coat.

**3** Training - Have them show ready "yesterday"! They need to be halter broke and ready to show now! Get them in the chute, use the blower and stick now!

**4** Hair Care - We started in August getting their hair ready for you! Now keep it going to help them reach their potential. More inside on what to do now.....

**5** Ask - Don't be afraid to ask questions. The best way to learn is through networking. Give us a call if you have questions on the process.

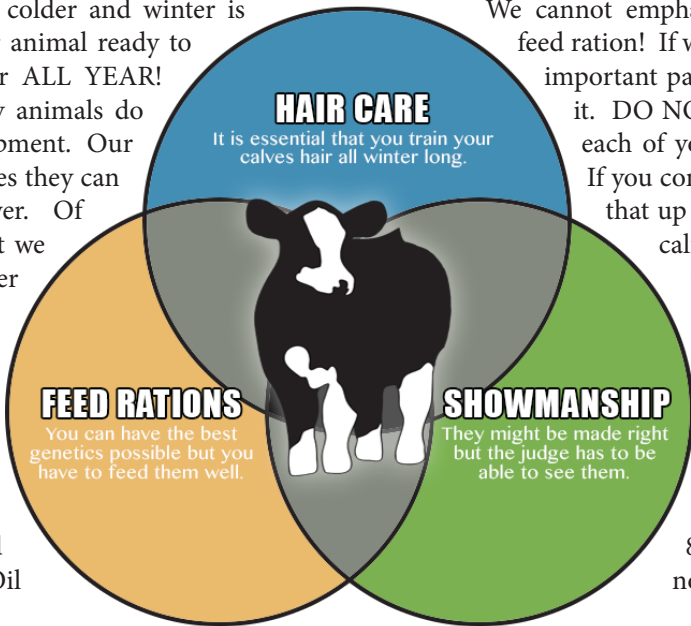




We get asked a lot “What is the secret to raising a grand champion steer?” Genetics do play a role, but more times then we can count we have seen calves that were not the high selling steer sweep their prospective shows! How are people accomplishing this with a calf that was not considered the BEST at the sale? We have assembled for you how this is done. Over and over, tried and true processes that will get you to the champion spot. The graphic below is a visual representation of the BIG THREE!

## HAIR CARE

Even though the days are getting colder and winter is upon us. If you want to have your animal ready to show you should be working hair ALL YEAR! We have found that clean, healthy animals do so much better on feed and development. Our rule of thumb, if it is over 40 degrees they can be washed and dried with a blower. Of course use your own judgment but we have never had issues. As winter arrives do all that you can to keep the “dingle berries” (the manure clumped to the lower quarter) from happening. This leads to a mess in the spring. Combing them often is the best way to prevent that. This time of the year we use Vita Charge shampoo and mixture of Kleen Sheen and Rag Oil to help keep the hair healthy.



## SHOWMANSHIP

Your calf should be home and settled in by now and you might ask what should I be doing now. We have been raising club calves now for over 20 years and one thing we are very firm on to help you succeed is HALTER break them NOW! Don't wait. Get this done as soon as you can, while that are 600 lbs not 1000 lbs. By now, they should be halter broke, leading, being rinsed, dried and worked with a stick. They don't forget and they will be better to work throughout the winter if they are settled down now. Spend time with them. We had a “How to Break Your Calf” pamphlet at the preview that we would be more than happy to send to you if you need it. Your calf should be up to 8-10 lbs of grain. We can't stress enough the importance of having them on full feed all winter long. Their quality really depends on you and the feed now. If you do not have a shelter in place for your animal we recommended having them a place to get out of the elements. We have found HAPPY club calves win, unhappy club calves.... well, they are just not so lucky! We will let you know in further newsletters when it time to shed, trim hooves, etc... We are excited for you and look forward to great year! Good Luck!



# WHAT'S THE SECRET TO A GRAND CHAMPION

## FEED RATIONS

We cannot emphasis enough the importance of your feed ration! If we were going to say what is the MOST important part to raising a club calf this would be it. DO NOT skimp on the feed. We have given each of you a feed ration that we recommend. If you contact your local feed mill they can mix that up or something pretty close. Start your calf on grain today! Do not wait until the first of the year. That works okay for a feedlot critter, but if you want the muscle you purchased from us to stay, they need to be getting the right protein over the winter. We can slow them down as the spring approaches but feed them hard in the winter. We recommend that your calves be up to 8-10 lbs of grain by now. If they are not, you are behind the eight ball.

## QUALITY & YIELD GRADES



One of the common questions asked at the show is “What is your prediction of quality grade and yield grade on this calf?” This section should lead you in the right direction to better answer that as you show. A quality grade is a composite evaluation of factors that affect palatability of meat (tenderness, juiciness, and flavor).

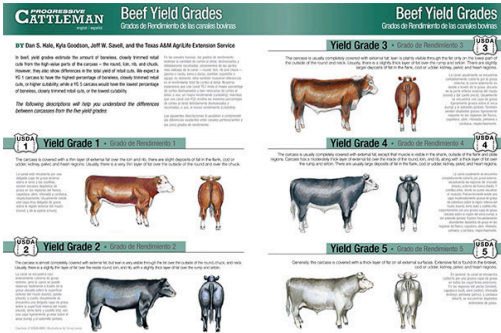


Chart found on [www.progressivecattle.com](http://www.progressivecattle.com)

These factors include carcass maturity, firmness, texture, and color of lean, and the amount and distribution of marbling within the lean. Beef carcass quality grading is based on one, a degree of marbling and two, a degree of maturity. Yield grades in beef, estimate the amount of boneless, closely trimmed retail cuts from the high-value parts of the carcass—the round, loin, rib, and chuck. However, they also show differences in the total yield of retail cuts. We expect a YG 1 carcass to have the highest percentage of boneless, closely trimmed retail cuts, or higher cut-ability, while a YG 5 carcass would have the lowest percentage of boneless, closely trimmed retail cuts, or the lowest cut-ability. The USDA Yield Grades are rated numerically and are 1, 2, 3, 4, and 5. Yield Grade 1 denotes the highest yielding carcass and Yield Grade 5, the lowest. More can be found on-line but this will give you a head start.

## Exhibitor Spotlights

Tyler | Utah | Age: 15 | Calf Name: Little T

My name is Tyler Morgan. I've been raising and showing animals for as long as I can remember, following in the footsteps of my siblings. There's nothing I love more than spending hours and hours with my animals - sheep or cattle - prepping them for upcoming livestock shows or jackpots. Those hours and hours of work with my animals pays off when I'm in the show ring, holding that top 10 or grand champion ribbon. I show because of the friendly competition amongst friends and animals, the excitement of getting pulled back into the ring or being left standing out of the line,



and the life lessons it's taught me. I bounce between 4-H and FFA, and plan to be a large animal vet someday.



Abby | Utah | Age: 16 | Calf Name: Etta

I was drug into the cattle life by the horns, I guess you can say. My dad is a cattleman and by gosh I was going to be one too. Little did I know only a short while later I would find a passion that would improve even my darkest days. Cattle is my life now and I don't know what I would do if it wasn't, it is a sport anyone can be an athlete in. Not only can anyone show, anyone can learn about these fascinating bovine and understand just how amazing they really are. I show because I am a cattleman and it is my passion.



## Health Care Guide



The health of your animal can really effect their overall progress. As winter approaches be sure to keep a close eye on them. Some of the common issues you will see is, Pneumonia, Foot Rot, Ringworm and digestive tract issues. The best way to watch for any issues is really lack of appetite. If your animals falls off feed for more then 24 hours you need to be concerned and should contact your local vet. For Pneumonia and Foot Rot we have found Draxin to be the best remedy. Ringworm..... good luck, it will eventually go away. As you increase your calf on feed this winter you will need to watch for diarrhea and loss of appetite. If either are present you need to back the feed off a little and slow them down. As always we are more then willing to help you in anyway so give us a phone call. We have fed alot of cattle and feel like we have seen it all!